



**Queen Margaret
University**
EDINBURGH

Study Skills: Preparing for University

Critical thinking

Bobby Pathak

At university, you are expected not just to work hard, but to work intelligently on your own. A significant component of this personal academic study is critical reading (Argent, 2013).

In breakout rooms, think of as many ways to complete this statement as fully as you can:

At university, a critical reader is someone who ...



(Altmann, no date)

What does it mean
to be a critical
reader?

What does it mean
to be critical in
general?

You are about to join an academic Community of Practice (CoP)



Queen Margaret
University
EDINBURGH

The concept of CoP 'is a perspective that locates learning, not in the head or outside it, but in the relationship between the person and the world [...] In this relation of participation, the social and the individual constitute each other.'

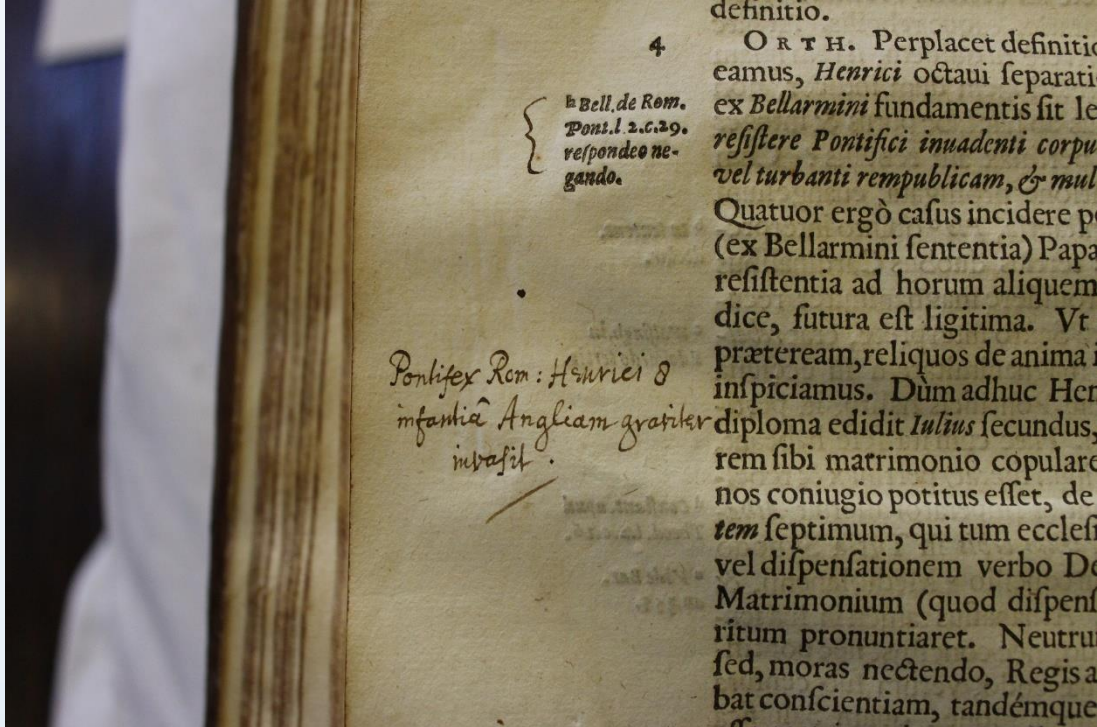
(Wenger, 2010 p. 179)

Your critical approach, for instance to writing, is going to be directed by the conventions followed by your new academic CoP.

But what does this mean?



(Tan, no date)



Matuszewski (no date)



Queen Margaret
University
EDINBURGH

- a.** Read critically – have a purpose to your reading
- b.** Source academic texts – don't rely on nonacademic blogs or Wikipedia
- c.** Avoid using personal pronouns in your writing
- d.** Synthesize the information in the academic literature to support or refute your stance
- e.** That means you have to have an opinion which you can only get by reading around a subject
- f.** Do **b**, **d** & **e** without being accused of plagiarism



Queen Margaret
University
EDINBURGH

'They don't signal the importance of the points they are making clearly enough. The writing is almost too descriptive and not persuasive enough.'

'When I give them lemons, I don't want lemons back – I want the juice.'

'When they write, they have no voice – they just string together other people's ideas like pearls in a necklace.'

(Argent & Alexander, 2013)

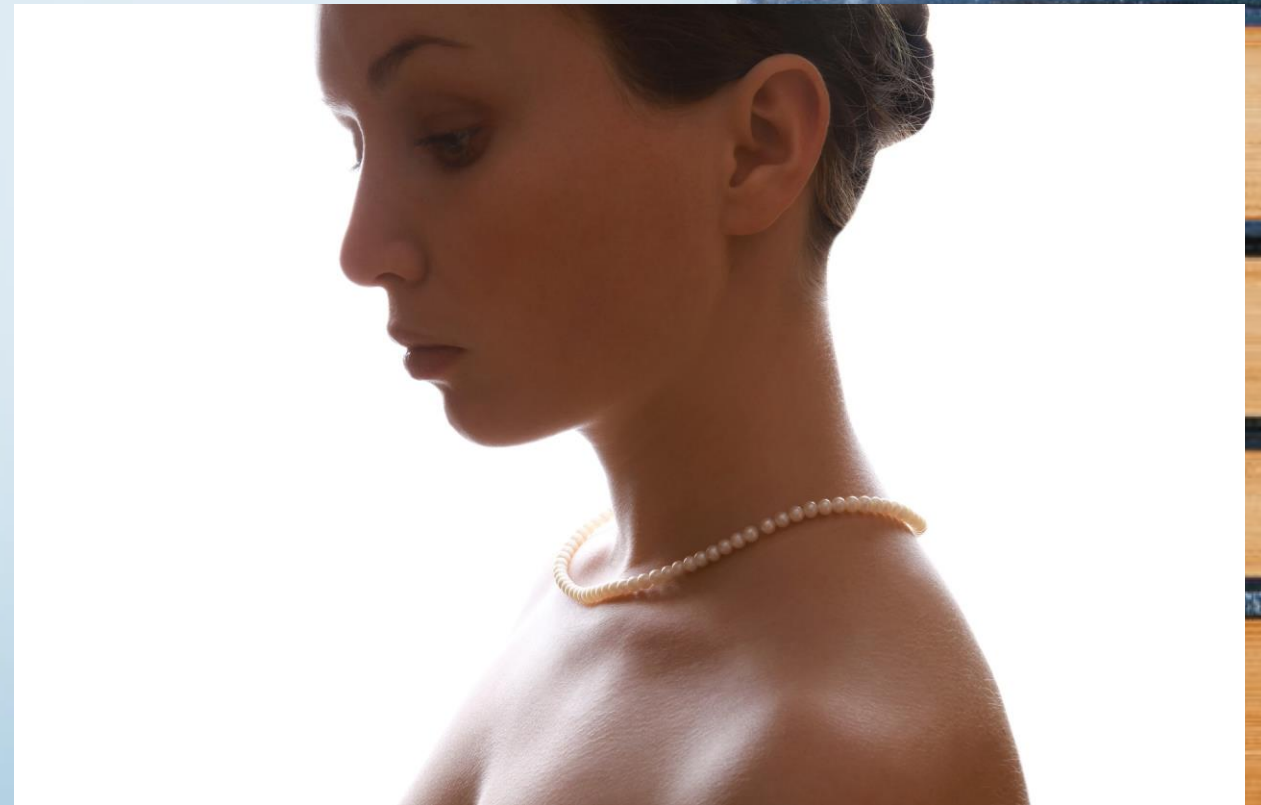


Queen Margaret
University
EDINBURGH

Give your tutors lemon juice NOT pearls!



(Silviarita, no date)



(Akin, no date)

Any questions?



**Queen Margaret
University**
EDINBURGH



References:



**Queen Margaret
University**
EDINBURGH

Akin (no date) Woman wearing female [Digital Image]. Available at:
https://pixabay.com/users/nika_akin-13521770/?utm_source=link-attribution&utm_medium=referral&utm_campaign=image&utm_content=4660887

Altmann (no date) Books question mark [Digital Image]. Available at:
https://pixabay.com/users/geralt-9301/?utm_source=link-attribution&utm_medium=referral&utm_campaign=image&utm_content=4158244

Argent, S., & Alexander, O. (2013). *Access EAP: Frameworks: Course Book with audio DVD*. Garnet Education.

Argent, S. (2013). *From high school to university: A handbook for EAP students*. Summerford: Gateway University Press

Matuszewski (no date) Book note education [Digital image] Available at:
https://pixabay.com/users/mzmatuszewski0-825220/?utm_source=link-attribution&utm_medium=referral&utm_campaign=image&utm_content=1850880



References:



**Queen Margaret
University**
EDINBURGH

Silviarita (no date) Hot lemon [Digital Image]. Available at:
https://pixabay.com/users/silviarita-3142410/?utm_source=link-attribution&utm_medium=referral&utm_campaign=image&utm_content=1918107

Tan (no date) Library [Digital Image]. Available at:
https://pixabay.com/users/andrew_t8-1822880/?utm_source=link-attribution&utm_medium=referral&utm_campaign=image&utm_content=1400313

Wenger, E. (2010). Communities of practice and social learning systems: the career of a concept. In *Social learning systems and communities of practice* (pp. 179-198). Springer, London.

